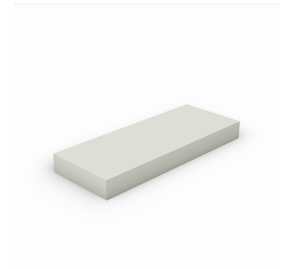




REVIT CONTENT GUIDE

Manufacturer: Wiremold
File: Face_Plate-5507_Series-Wiremold.rfa
Type Catalog: Face_Plate-5507_Series-Wiremold.txt
Rendering file: Not Applicable
Schedule file: Schedule - Raceway-5500.rvt



Instance Properties

Graphics	
Has Snap Locations*	<input checked="" type="checkbox"/>
Identity Data	
Equipment Number*	
Part Description*	Not Available
Part Number*	Not Available

Type Properties

The family contains the following 1 types:
 Use Type Catalog (Values for this type are shown below)

Constraints	
Default Elevation	48.000
Dimension	
Depth*	0.438
Height*	1.688
Width*	4.250
Identity Data	
Copyright*	Copyright © Wiremold
Date Last Modified*	May 28, 2013
Description*	See Part Description
Equipment Abbreviation*	DP
Family Version*	1.0.0
Manufacturer*	Wiremold
Model*	See Part Number
Model Disclaimer*	For More Information, Contact Wiremold
Original Creation Date*	May 28, 2013
Product Documentation Link*	Use Type Catalog
Product Page URL*	Use Type Catalog
Provide Feedback*	https://www.surveymonkey.com/s/BDXT5XT
Type Image	-1
URL*	http://www.legrand.us/wiremold.aspx
Ifc	
ClassificationCode*	
ClassificationCode(10)*	
ClassificationCode(2)*	

Ifc	
ClassificationCode(3)*	
ClassificationCode(4)*	
ClassificationCode(5)*	
ClassificationCode(6)*	
ClassificationCode(7)*	
ClassificationCode(8)*	
ClassificationCode(9)*	
IfcApplicableOccurrence*	
IfcDescription*	
IfcElementType*	
IfcExportAs*	
IfcExportType*	
IfcName*	
IfcTag*	
Materials	
Product Material*	10512

Half tone text in the property tables indicates that the value is locked from editing.

*Indicates Shared Parameter and can be scheduled

Loading and Placing into the Project

One "Electrical Fixtures" family is supplied and can be loaded only through the Type Catalog method. This can be done via the 'Insert' tab in Revit. However, the .txt file must accompany the family file for this to work properly. Users select the desired type in the resulting dialog box and click insert to load the desired types.

The face plate requires a host to be placed within the project (i.e. mounting bracket). Also, ensure that the visibility settings within the project are modified to have the Electrical Fixtures category visible.

For ease of use all raceway should be placed in 3D.

Project Behavior

Within the type properties, the user will find useful information about the product by following the URL links given. The user will also find family revision information, Wiremold copyright information, part description, product URL and other specific data. *See scheduling description below.

Refer to product documentation for more information regarding included hardware, device plate intended location, requirements, sizes and options.

Instance Parameter

In the "Instance Parameters", the user has the following options to modify:

Equipment Number - For tagging each placed instance.

Has Snap Locations - turns off/on the crosshairs for placing devices on the device plate

Type Parameter

Each type represents a manufactured product. Therefore, the type parameters should not be modified by the user for standard configuration. Please note:

Product Page URL - Directs to the manufacturer's online listing of the product.

Product Documentation Link - Directs to the product's online specification sheet.

Equipment Abbreviation - This parameter exists for filtering schedules. *See scheduling description below.

Family Version - Lists the current revision number of the family.

Visibility

For best performance, all model geometry is turned off in all views and represented through masking regions and symbolic/model lines that update automatically when a user changes view properties.

Rendering

When the family file is loaded into the project, standard Wiremold materials are imported. These may be modified, though ensure that the

modification selection matches an actual manufacturer supplied option.

Schedule Creation

Wiremold products may be scheduled utilizing the schedule view in the given project file. Select and copy (Ctrl-C) the schedule from the sheet view and paste it (Ctrl-V) into a sheet in your project. The schedule filters are set to look for only those units designated with Manufacturer as "Wiremold" and Equipment Abbreviation as "DP". The schedules contain special functionality for displaying the configured order numbers of the selected types.